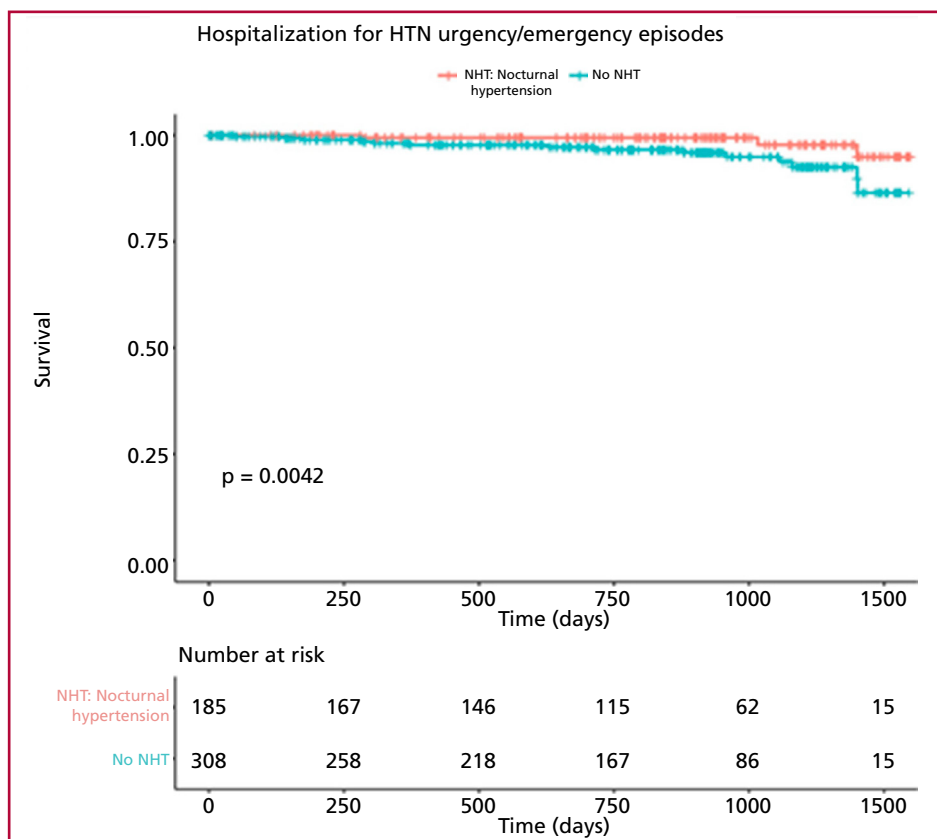
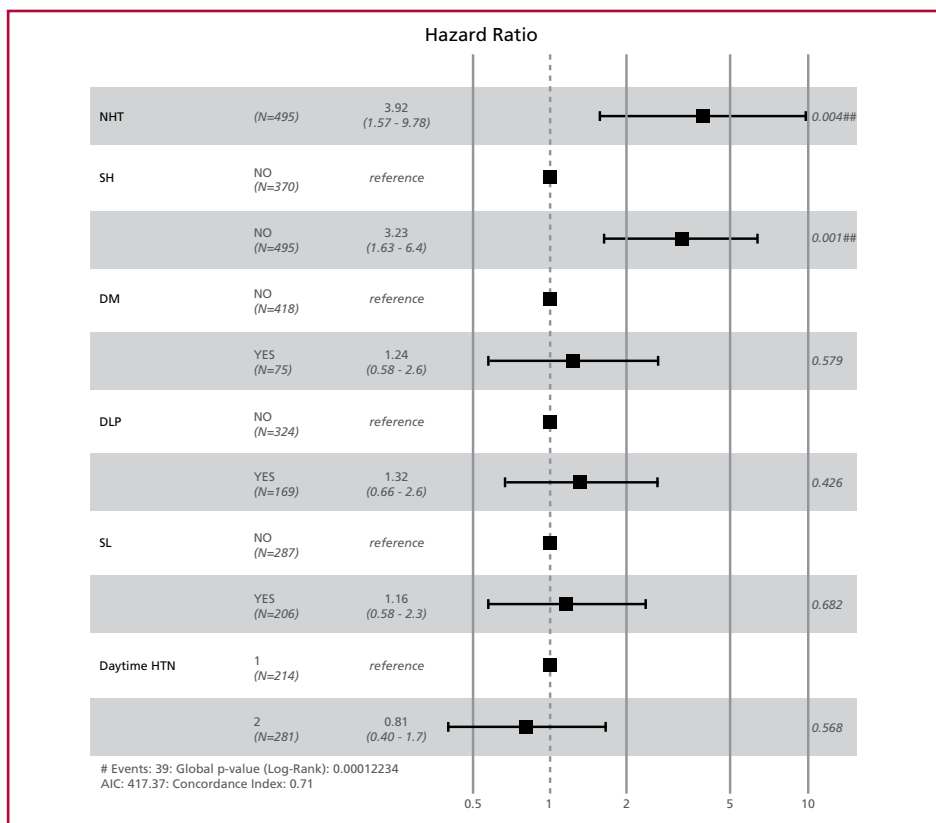


Supplementary material



NHT: nocturnal hypertension

Fig. 3. Survival free of hospitalization for episodes of HT urgency/emergency



NHT: nocturnal hypertension SH: smoking habits DM: diabetes DLP: dyslipidemia SL: sedentary lifestyle HTN : hypertension

Fig. 4. Multivariate analysis, relative risk of the primary endpoint according to risk factor. umber of HF hospitalizations, and survival curve

List of R Studio packages (version 1.4.1106).

- Resource Selection: to evaluate the goodness-of-fit test for the logistic regression model using the Hosmer and Lemeshow test.
- nricens: to calculate the net reclassification index and reclassification tables, using the Kaplan-Meier estimator.
- Tidyverse: for data manipulation, import, exploration and visualization.
- Random Forest: search for predictors.
- GLMnet: search for predictors with Lasso.
- GGplot2 and Survimer: survival curves and graphs.
- Stats: StepAUC function to select the best model according to Akaike.
- Survival: to perform Cox regression models, Kaplan-Meier survival curves, and Cox-Mantel test.